

WATERWORKS

PRODUCT SUPPORT
800.927.2120
WATERWORKS.COM

AERO

Low Profile Three Hole Deck Mounted Lavatory Faucet with Ebony Lever Handles in Chrome

STYLE No. AELS02
REFERENCE No. AELS04C
ITEM No. 07-25606-32208

SPECIFICATIONS
PAGE 1 OF 3

DESIGN

Inspired by the stepped detail of 19th century telescopes, Aero is a combination of historical reference with a contemporary temperament. The result is original and modern, bringing a look of updated elegance to the bathroom.

FEATURES

Metal, ebony or ebony inlay handle options provide a perfect complement to the family's defined contours and distinct statement.

This item is stocked in a Chrome and Nickel finish and is available to ship in 2-3 business days (subject to availability) from Waterworks. Additional made-to-order finish options listed below are available in 12 weeks from purchase.

Signature gadrooning detail on the escutcheon and edge of spout.

Flow rate regulated at 2.2 gallons per minute (gpm).

Complies with 0.25% Weighted Average Lead Content (WALC).



SHOWN IN Nickel

WATERWORKS

PRODUCT SUPPORT
800.927.2120
WATERWORKS.COM

AERO

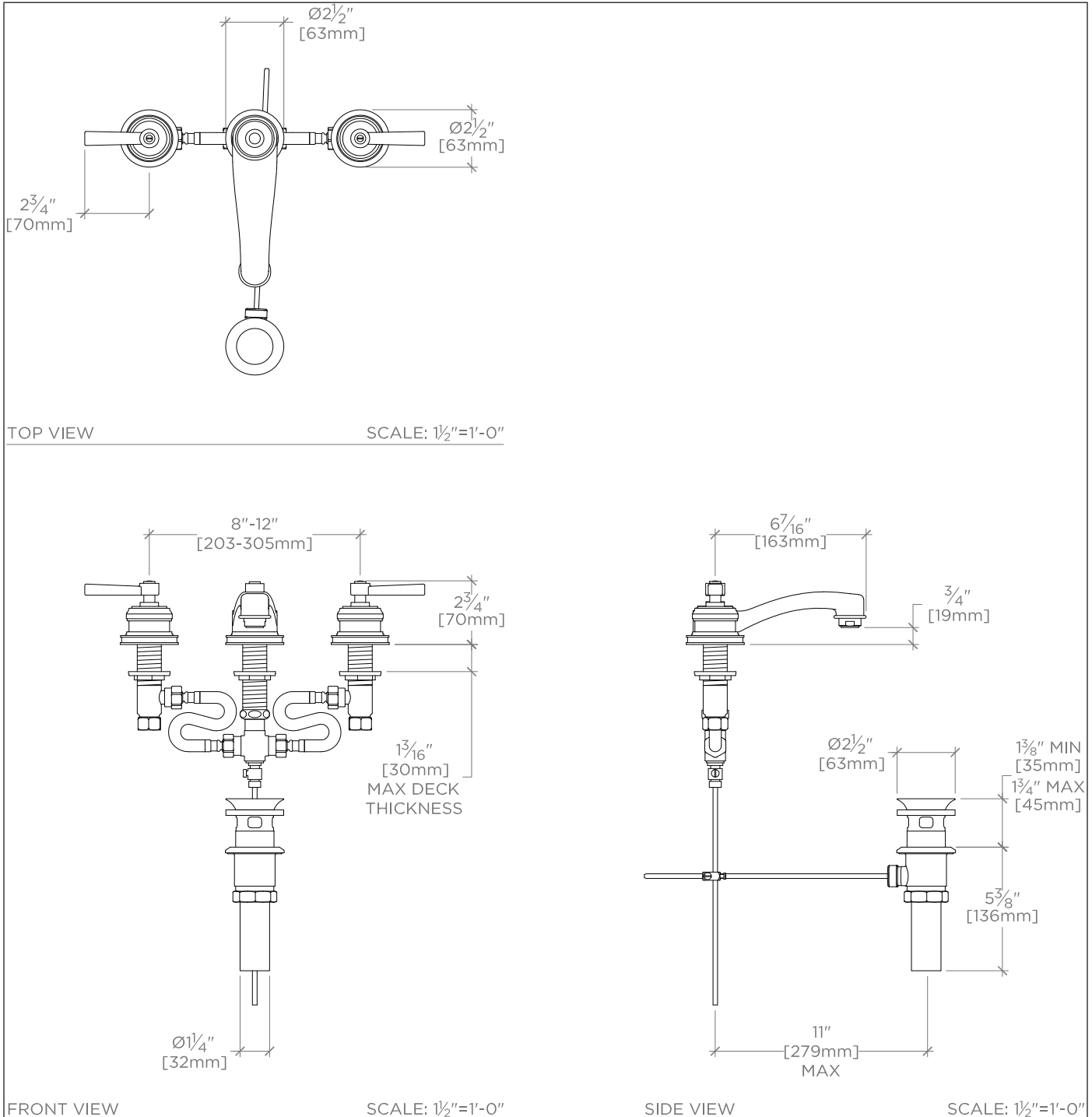
Low Profile Three Hole Deck Mounted Laboratory Faucet with Ebony Lever Handles in Chrome

STYLE No. AELS02
REFERENCE No. AELS04C
ITEM No. 07-25606-32208

SPECIFICATIONS

PAGE 2 OF 3

All dimensions are based on original specifications and are subject to change and variation. Please consult your Design Associate for current specifications.



WATERWORKS

PRODUCT SUPPORT
800.927.2120
WATERWORKS.COM

AERO

Low Profile Three Hole Deck Mounted Lavatory Faucet with Ebony Lever Handles in Chrome

STYLE No. AELS02
REFERENCE No. AELS04C
ITEM No. 07-25606-32208

SPECIFICATIONS
PAGE 3 OF 3

SPECIFICATIONS

Primary Material: Brass
Drain Depth Maximum: 1 $\frac{3}{8}$ "
Drain Depth Minimum: 1 $\frac{3}{4}$ "
Drain Hole Diameter: 1 $\frac{5}{8}$ "
Drain Style: Pop-up
Handle Spread Maximum: 12"
Handle Spread Minimum: 8"
Inlet Connection Size: $\frac{1}{2}$ "
Inlet Connection Type: Male with Supply Nut
Inlet Supply Spread Maximum: 12"
Inlet Supply Spread Minimum: 8"
Maximum Deck Thickness: 1 $\frac{3}{16}$ "
Minimum Deck Thickness: 0"
Maximum Water Pressure: 75 psi
Minimum Water Pressure: 20 psi
Fittings Hole Diameter: 1 $\frac{3}{8}$ "
Recommended Water Pressure: 45 psi
Restricted Maximum Flow Rate: 2.2 gpm

CARE INSTRUCTIONS

Wash surfaces gently with a soft damp cloth; use a neutral liquid soap with water for daily cleaning, dry any overspray.

CODES AND STANDARDS

None

FLOW RATE CURVE

REQUIRED PLUMBING DETAILS

Below is a list of choices that must be made to complete your lavatory faucet.