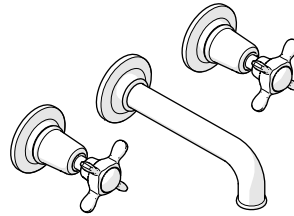




ESTB. 1978

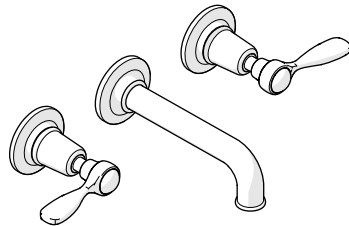
WATERWORKS

SERVICE PARTS



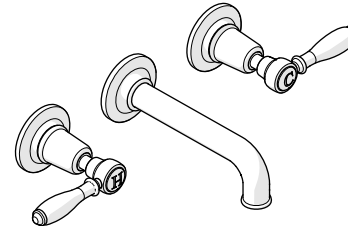
STYLE EALS41

Easton Classic Low Profile Three Hole Wall Mounted Lavatory Faucet
with Metal Cross Handles



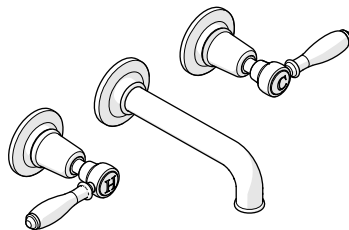
STYLE EALS42

Easton Classic Low Profile Three Hole
Wall Mounted Lavatory Faucet
with Metal Lever Handles



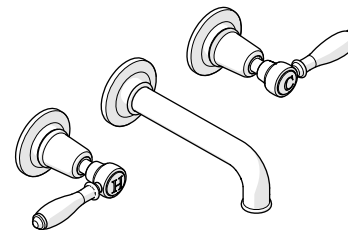
STYLE EALS43

Easton Classic Low Profile Three Hole
Wall Mounted Lavatory Faucet
with White Porcelain Lever Handles



STYLE EALS44

Easton Classic Low Profile Three Hole
Wall Mounted Lavatory Faucet
with Black Porcelain Lever Handles



STYLE EALS45

Easton Classic Low Profile Three Hole
Wall Mounted Lavatory Faucet
with Oak Lever Handles

WELCOME TO

WATERWORKS

For over three decades, Waterworks has transformed the bath through an absolute commitment to design authenticity, innovation and quality. A blend of scholarly appreciation and applied experience guarantees mechanical integrity, meticulous craftsmanship, and timeless designs.

**TO ORDER PARTS CALL
1 (800) 927-2120 (EXT 2)**

Order by part number and specify color, finish, or other options if required.

PRODUCT SUPPORT

Our Product Support team provides troubleshooting and technical problem resolution, including replacement parts and installation recommendations throughout the life of your product.

Product Support is available Monday through Friday, 8AM-6PM EST.

**LIMITED LIFETIME
WARRANTY**

Our warranty covers repair and replacement of Waterworks products if within the applicable coverage period and deemed defective by Waterworks. Waterworks will, at its option, repair or replace such products; this does not include installation costs, labor charges, or other incidental or consequential costs.

To obtain your complete warranty or inquire about warranty service, please visit us at www.waterworks.com or contact our Product Support Team.



ESTB. 1978

WATERWORKS

MAIN KITS

STYLES: EALS41, EALS42, EALS43,
EALS44, EALS45

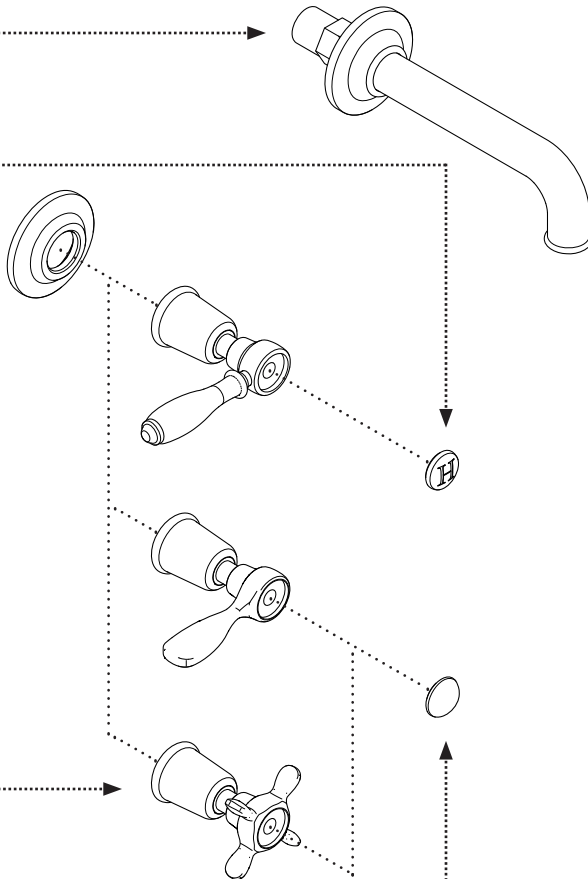
103617*
SPOUT

103554*
HOT METAL INDICE

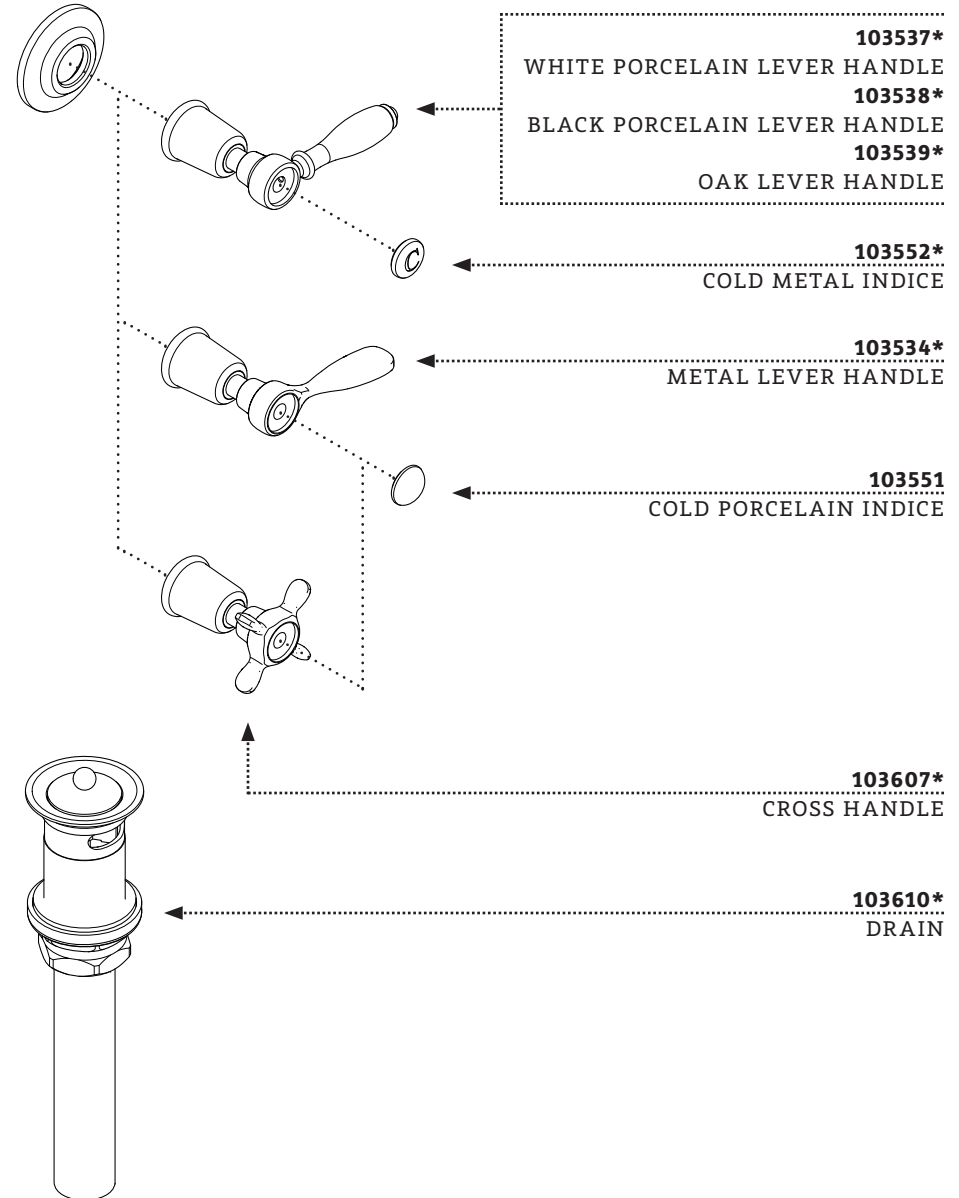
103571*
ESCUTCHEON

103607*
CROSS HANDLE

103553
HOT PORCELAIN INDICE



*FINISH/COLOR MUST BE SPECIFIED WHEN ORDERING
++SUPPLIED AS A PAIR



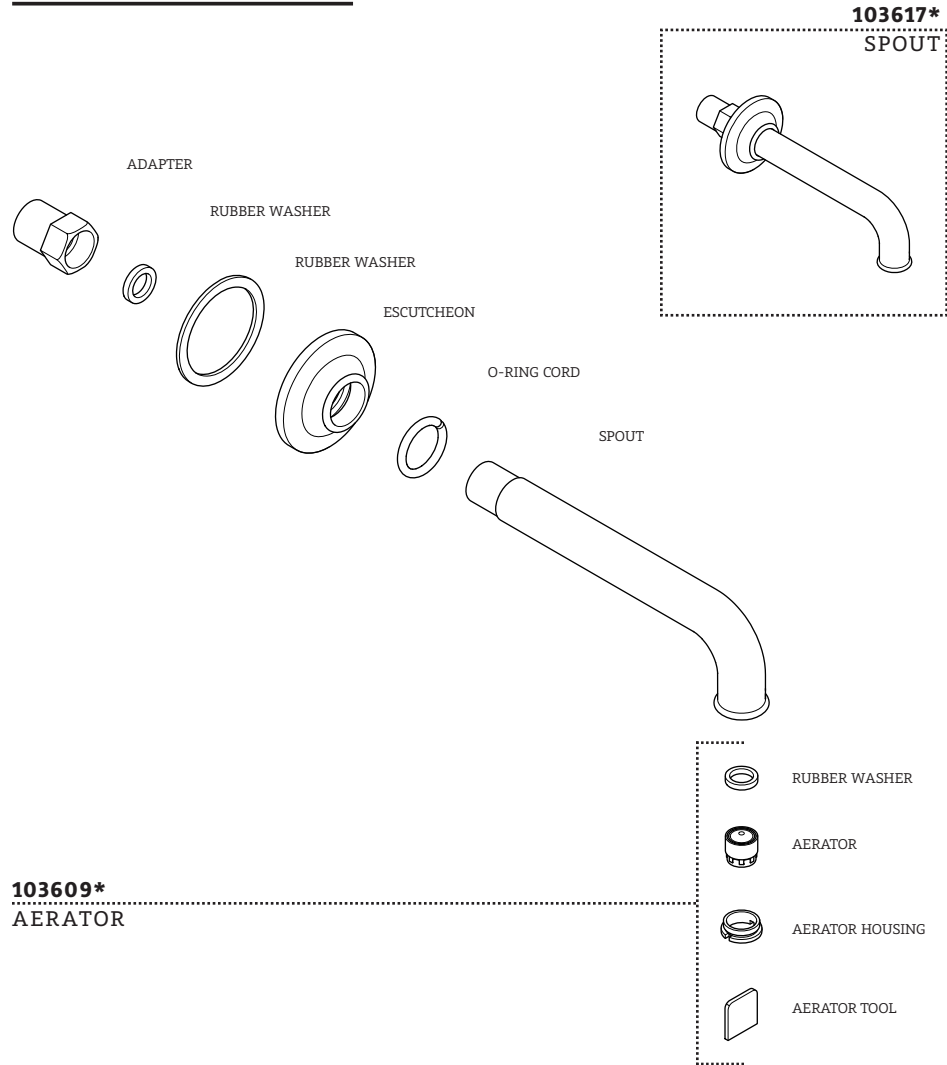


ESTB. 1978

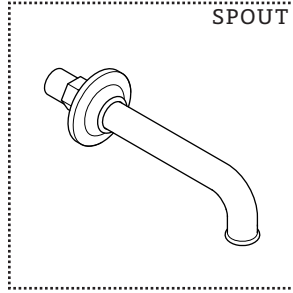
WATERWORKS

KIT COMPONENTS

**STYLES: EALS41, EALS42, EALS43,
EALS44, EALS45**

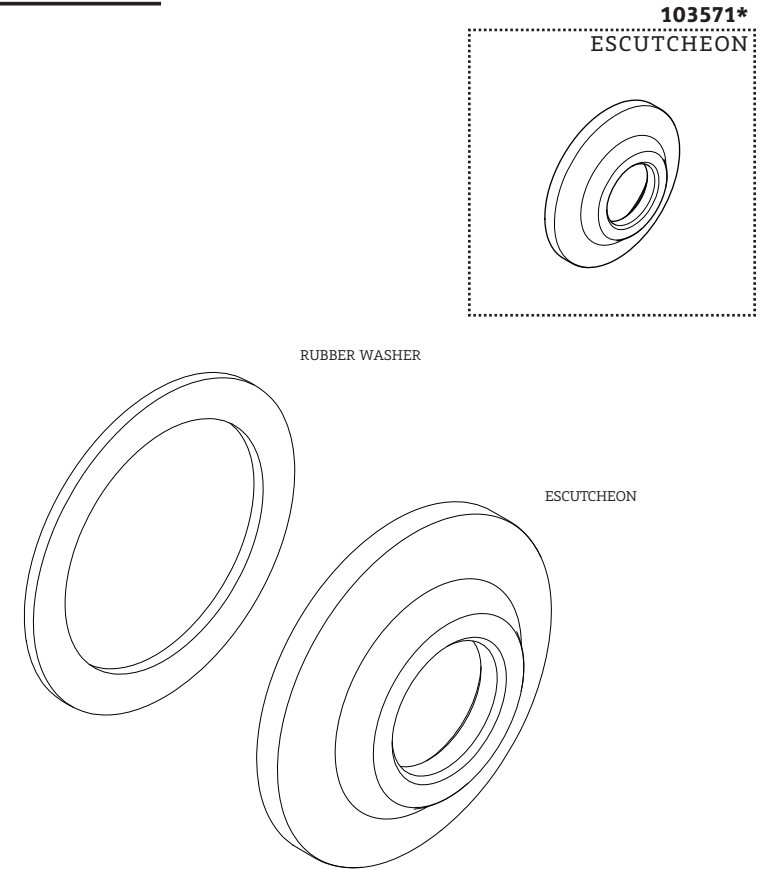


103617*
SPOUT



*FINISH/COLOR MUST BE SPECIFIED WHEN ORDERING
++SUPPLIED AS A PAIR

KIT COMPONENTS





ESTB. 1978

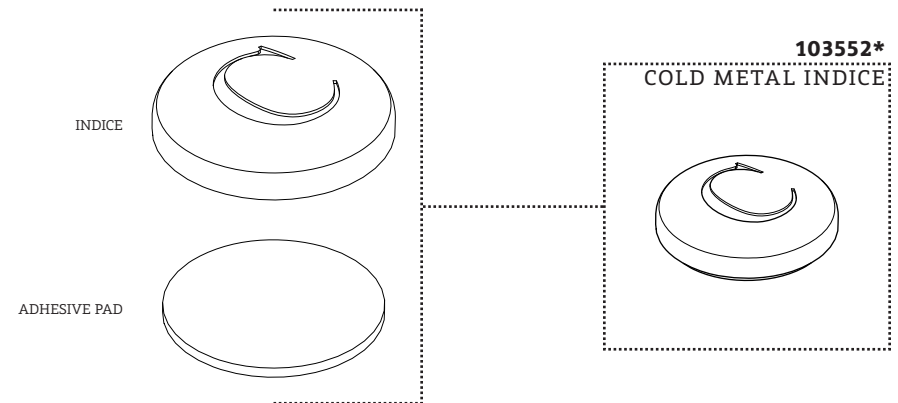
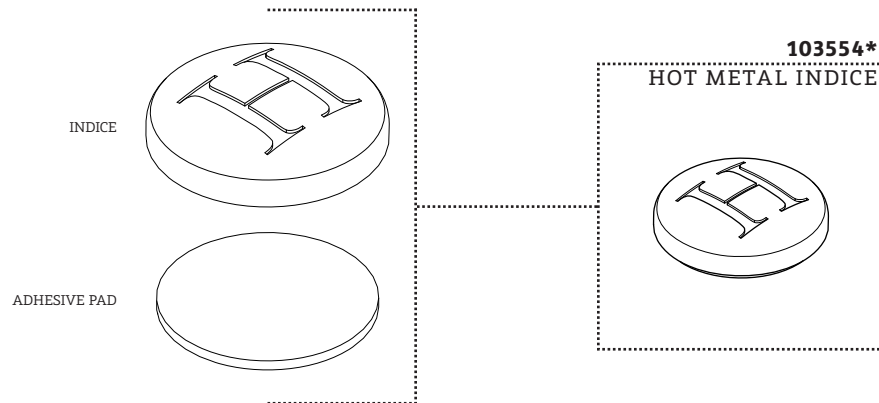
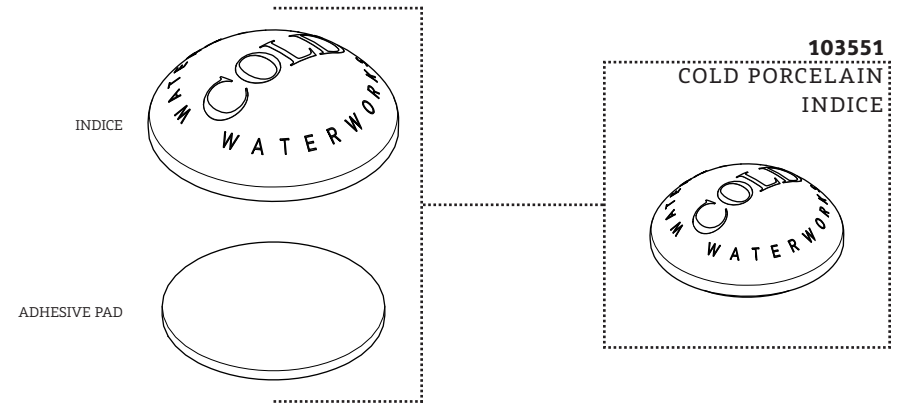
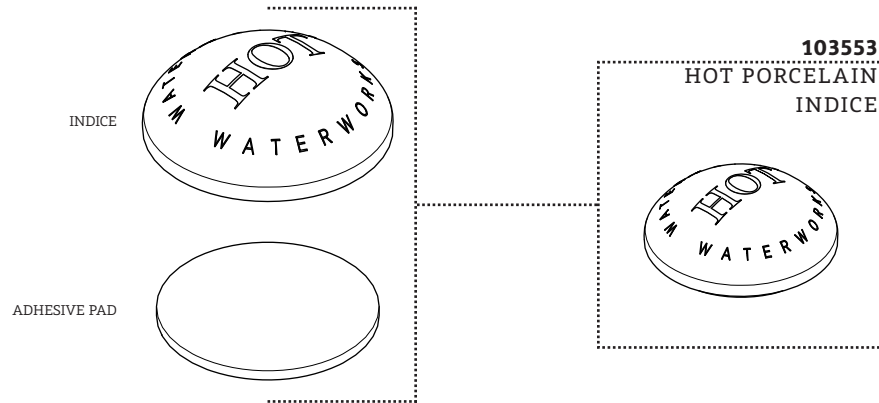
WATERWORKS

KIT COMPONENTS

STYLES: EALS41, EALS42, EALS43,
EALS44, EALS45

*FINISH/COLOR MUST BE SPECIFIED WHEN ORDERING
++SUPPLIED AS A PAIR

KIT COMPONENTS



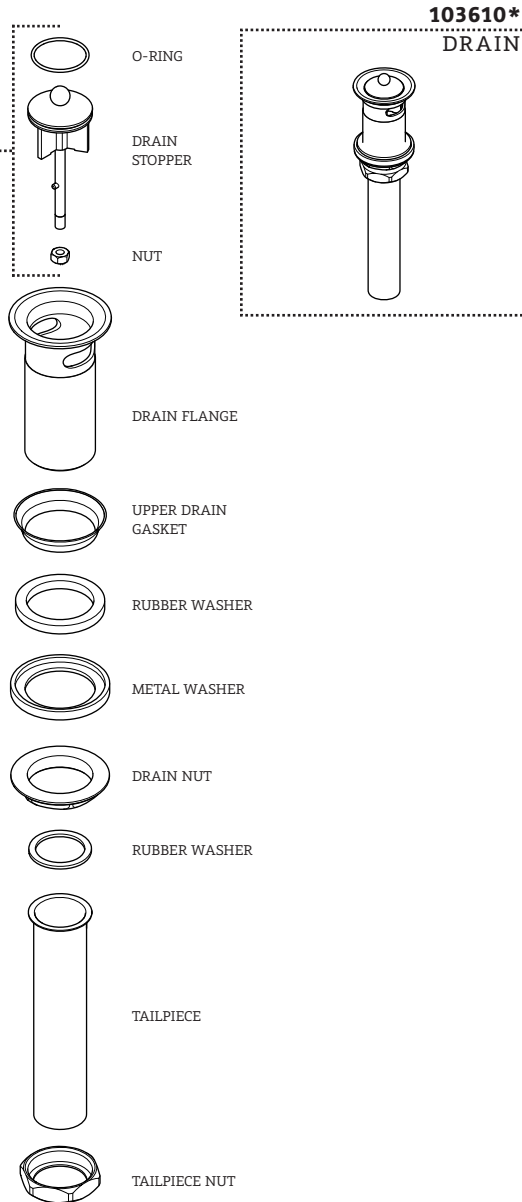


ESTB. 1978

WATERWORKS

KIT COMPONENTS

103611*
DRAIN STOPPER



**STYLES: EALS41, EALS42, EALS43,
EALS44, EALS45**

*FINISH/COLOR MUST BE SPECIFIED WHEN ORDERING
++SUPPLIED AS A PAIR

SERVICE PARTS INDEX

<u>STYLE</u>	<u>DESCRIPTION</u>	<u>PG</u>
103609*	AERATOR	4
103538*	BLACK PORCELAIN LEVER HANDLE	3
103552*	COLD METAL INDICE	7
103551	COLD PORCELAIN INDICE	7
103607*	CROSS HANDLE	3
103610*	DRAIN	8
103611*	DRAIN STOPPER	8
103571*	ESCUTCHEON	5
103554*	HOT METAL INDICE	6
103553	HOT PORCELAIN INDICE	6
103534*	METAL LEVER HANDLE	3
103539*	OAK LEVER HANDLE	3
103617*	SPOUT	4
103537*	WHITE PORCELAIN LEVER HANDLE	3

DOCUMENT: SPEA03_REV01



ESTB. 1978

W A T E R W O R K S

PRODUCT SUPPORT

60 BACKUS AVENUE

DANBURY, CT 06810

1 (800) 927-2120 (EXT 2)

WWW.WATERWORKS.COM