

WATERWORKS  
STUDIO

TAURUS2



MEDITERRANEAN REFINEMENT

Extremely durable, these Italian porcelain tiles have a simple, relaxed beauty. In soft nuanced shades that attract light, they give any space a quiet gleam.



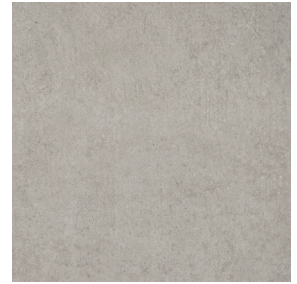
Field Tile in Putty Matte  
11 1/16" x 23 1/4"  
TAF224



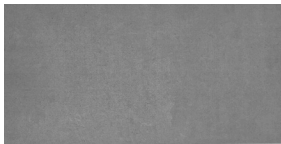
Field Tile in Putty Matte  
23 1/4" x 23 1/4"  
TAF424



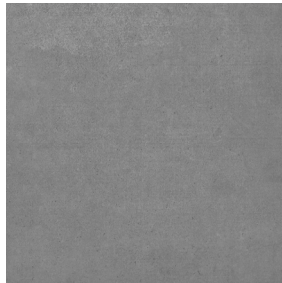
Field Tile in Gray Smoke Matte  
11 1/16" x 23 1/4"  
TAF224



Field Tile in Gray Smoke Matte  
23 1/4" x 23 1/4"  
TAF424



Field Tile in Ash Matte  
11 1/16" x 23 1/4"  
TAF224



Field Tile in Ash Matte  
23 1/4" x 23 1/4"  
TAF424

---

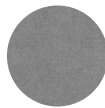
TILE COLORS



Putty Matte  
V2 <sup>Δ</sup>



Gray Smoke Matte  
V2 <sup>Δ</sup>



Ash Matte  
V2 <sup>Δ</sup>

\* 29 unique 23 3/8" x 23 3/8" tiles and 58 unique 11 11/16" x 23 3/8" tiles to create a natural look. Tiles are randomly packed and cannot be hand selected.

Sizes are nominal and may vary.

For finishing details, visit a showroom or [waterworks.com/studio](http://waterworks.com/studio).

<sup>Δ</sup> See variation chart

# WATERWORKS STUDIO

## TAURUS2

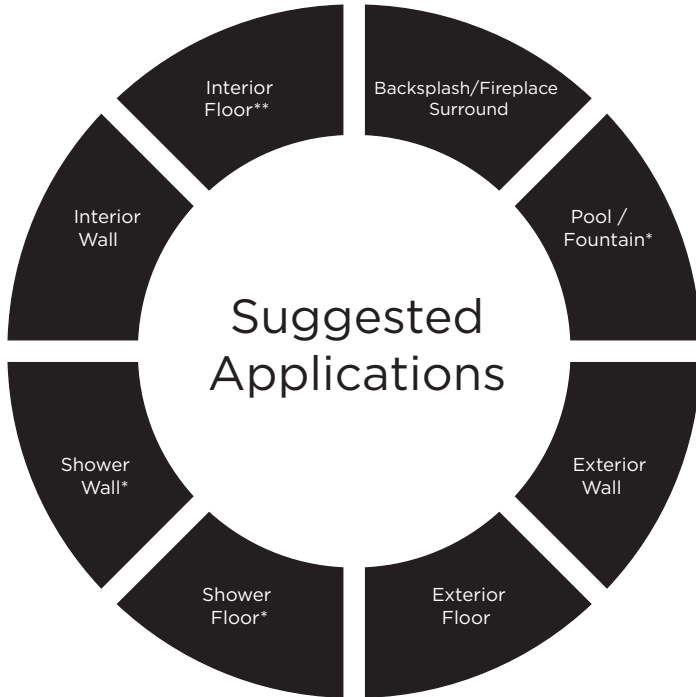
### ITEM INDEX

TAURUS	VARIATION*	11 11/16 x 23 3/8	23 3/8 x 23 3/8	SAMPLES (3 x 3)
Putty	2	X	X	X
Gray Smoke	2	X	X	X
Ash	2	X	X	X

\*SEE VARIATION CHART

# WATERWORKS STUDIO

## TAURUS2



● Recommended Use      ○ Not Recommended Use

### Application Notes

- \* Suitable for use in wet environments, including steam showers, if properly installed, sealed, and maintained
- \*\* For commercial applications, please inquire.

### Variation Level

V1	V2	V3	V4	V5

1. MINIMAL, IF ANY COLOR VARIATION
2. SLIGHT COLOR VARIATION CAN BE EXPECTED
3. A MEDIUM RANGE OF COLOR VARIATION IS TYPICAL; DARKER AND LIGHTER TONES ARE EVIDENT
4. CONSIDERABLE COLOR VARIATION IS TYPICAL; FROM DARKS TO LIGHTS AND SOME TONE CHANGES
5. EXTREME COLOR VARIATION CAN BE EXPECTED - THE RANGE IS OFTEN DIFFERING BUT COMPLEMENTARY

### Thickness

$3/8''^*$

\*Nominal:  $\pm 1/8''$

### Suggested Grout Lines

$1/16'' - 1/8''$

### Installation / Maintenance

- WATERWORKS ASSUMES NO RESPONSIBILITY FOR INSTALLATION
- Installation constitutes acceptance.
- Tile should be installed by a licensed and experienced tile setter.
- Refer to TCNA (Tile Council of North America) or ANSI standards for installation guidelines.
- All tile must be inspected PRIOR to installation.
- Dry lay tile prior to installation to allow for blending of color variation.
- Waterworks recommends a grouted test panel prior to installation to understand final appearance of grouted material.
- Seal grout after installation and maintain regularly.