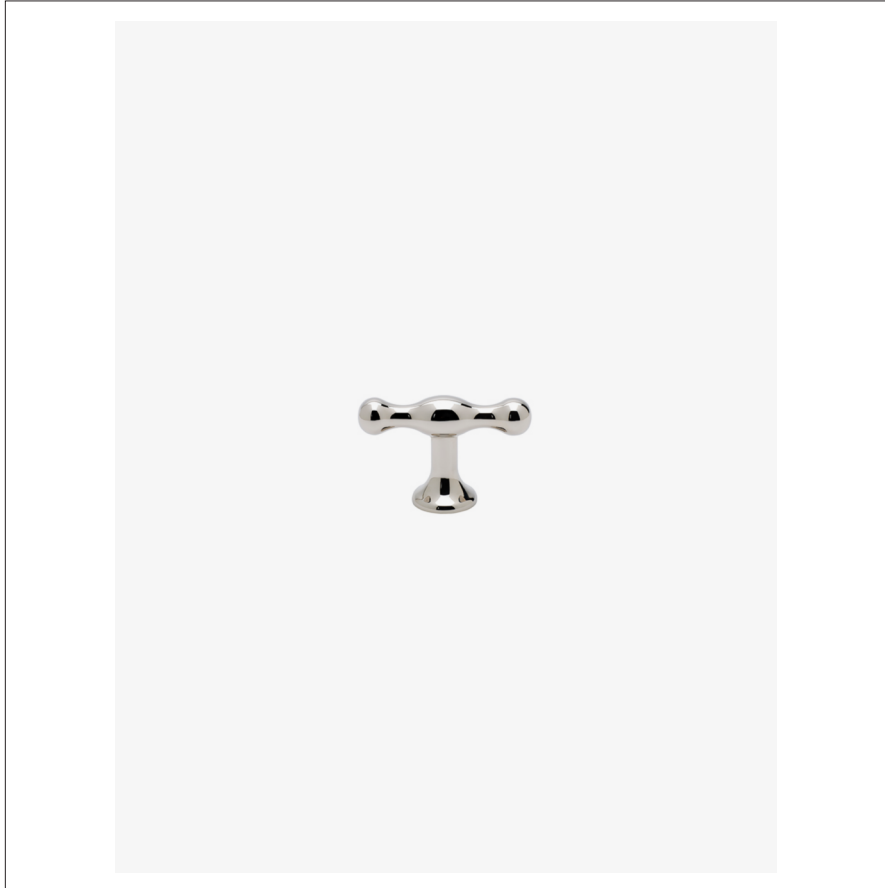


CUSHING

Cushing 2 1/4" Pull

CHHW20



SHOWN IN CUSHING 2 1/4" PULL| CHHW20

TECHNICAL DETAILS

Height: 1 9/16"
Length: 2 1/4"
Primary Material: Brass

INSPIRATION

Modern interpretations of early 20th Century machinery handles, the Cushing t-pull and knob are both strong and sculptural. Available in many sizes.

PRODUCT FEATURES

Solid Brass
Machined
Includes (1) hardware screw



PRODUCT (NOTES)

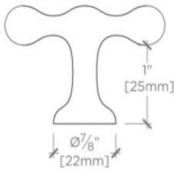
Replacement Screws available

CUSHING

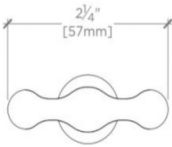
Cushing 2 1/4" Pull

CHHW20

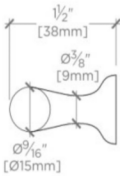
MOUNTING HARDWARE INCLUDED		
STYLE #	DESCRIPTION	QTY
998813	Service Parts 10/24 Pan Head Slot 1" Machine Screw	1
998814	Service Parts 10/24 Pan Head Slot 1 1/2" Machine Screw	1



TOP VIEW SCALE: 6"=1'-0"



FRONT VIEW SCALE: 6"=1'-0"



SIDE VIEW SCALE: 6"=1'-0"